

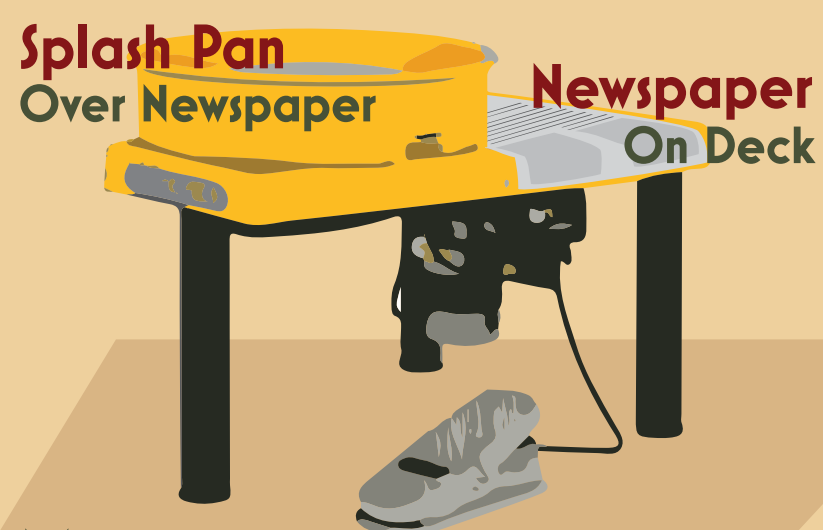


How to Clean DMS FIRED ARTS

CLEANING THE WHEEL

THROWING

Begin With a Proper Wheel Setup



Means Easier Clean-up!

After Throwing Clean-up

1 Remove Splash Pan

3 Water Bucket Clay & Slip Into Recycle Bucket

2 Splash Pan Clay & Slip Into Recycle Bucket

4 Take Equipment to Janitor's Closet Sink



5 Wash Everything Thoroughly

7 Put Things Away



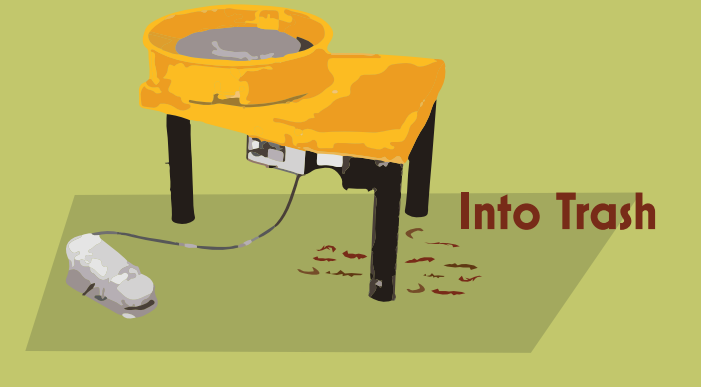
6 Return to Wheel



TRIMMING

1 Brush Clay From Wheel

2 Sweep The Floor



3 Wash The Wheel

4 Put Things Away



CLEANING THE TABLE

1 Scrape Up Clay
Plastic Scraper

2 Wipe Down Table
Clean Sponge

3 Put Things Away
Proper Places

