

**OPERATION-**

**BACKWARD FAST:** MOTOR RUNS AT FULL SPEED WHILE PUSH BUTTON IS PRESSED. WHEN BUTTON IS RELEASED, CONTACTS OF SPEED RESPONSIVE RELAY IN THE MOTOR (R1 & R2) REMAIN CLOSED UNTIL MOTOR COMES TO A STOP. NORMALLY CLOSED CONTACT "B" CLOSES CIRCUIT TO CR, ENERGIZING DINABRAKE WINDING WHILE MOTOR IS COMING TO A STOP.

**FORWARD FAST:** SAME AS BACKWARD FAST EXCEPT MOTOR IS OPERATED IN THE FORWARD DIRECTION.

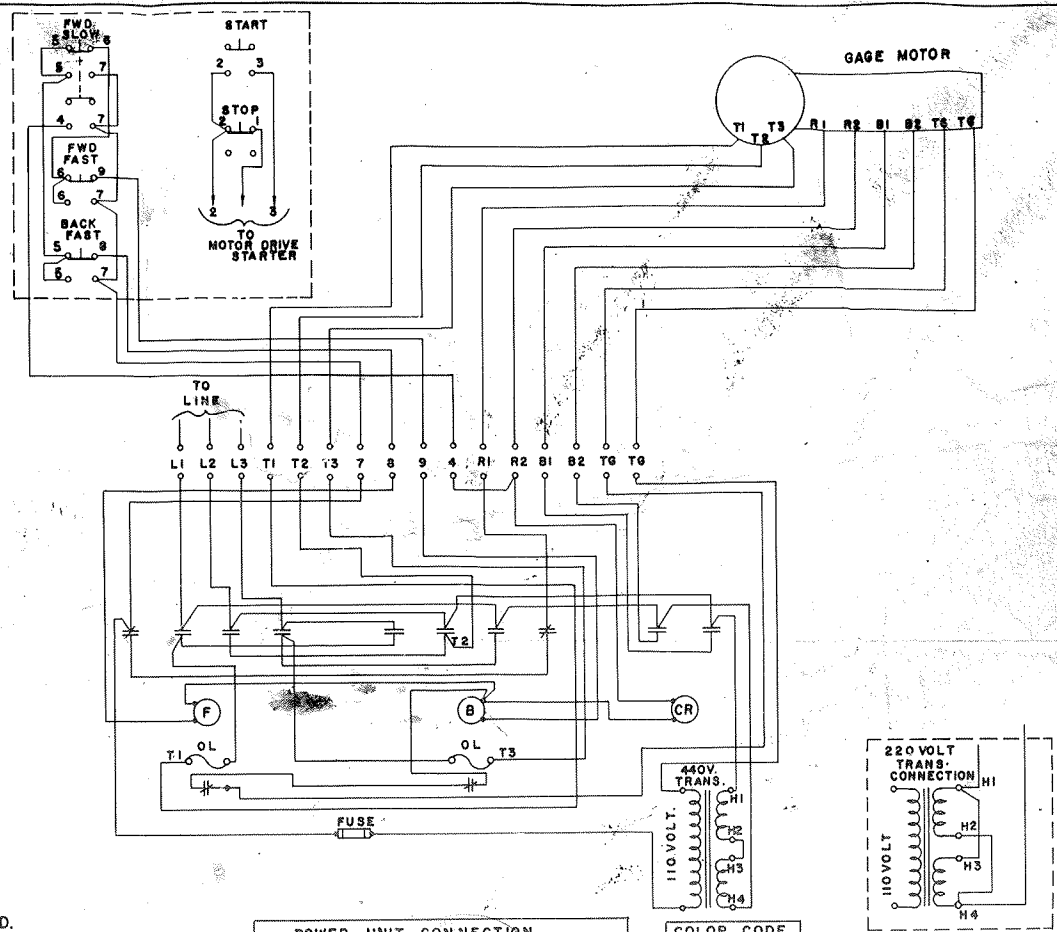
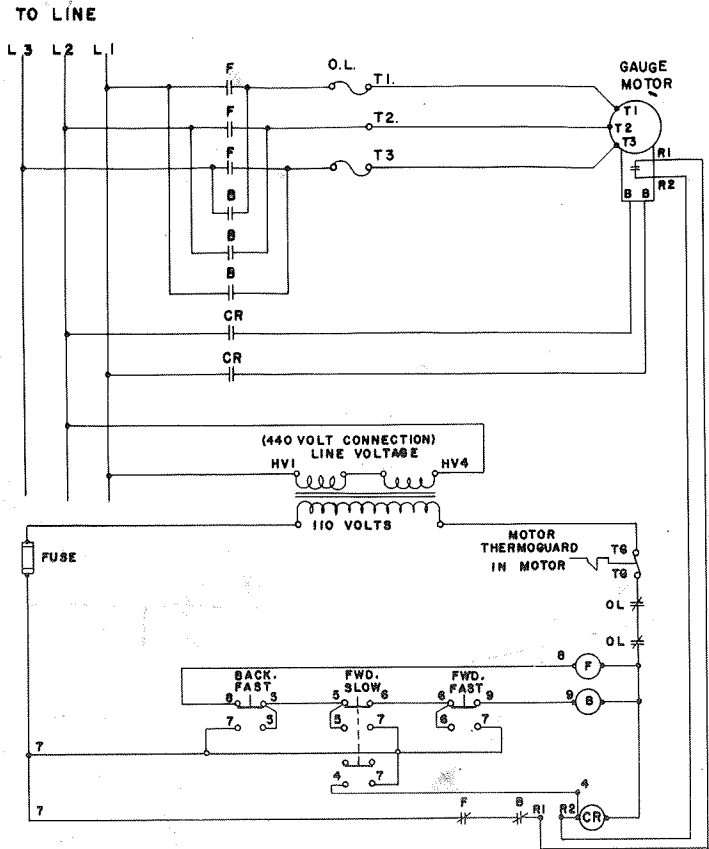
**FORWARD SLOW:** MOTOR WILL RUN AT A REDUCED SPEED. THE MOTOR AND THE DINABRAKE WINDING ARE ENERGIZED AT THE SAME TIME. THE MOTOR IS A TORQUE WOUND MOTOR AND OPERATES AT THE LOWER PORTION OF THE SPEED RANGE IN THIS SETTING. THE MAXIMUM TIME MOTOR SHOULD BE OPERATED IN THIS POSITIONING RANGE IS 20 SECONDS CONTINUOUS. THE MOTOR IS EQUIPPED WITH A THERMOGUARD TO PREVENT EXCESS HEATING OF THE WINDING. A SPRING SET FRICTION BRAKE IS PROVIDED FOR HOLDING AND IS INTERNALLY CONNECTED IN THE MOTOR.

POWER UNIT CONNECTION		
	220 VOLTS	440 VOLTS
MOTOR T1 TO	T1 & T7 & F7	T1
LEADS T2 TO	T2 & T8 & F8	T2
T3 TO	T3 & T9 & F9	T3
CONNECT TOGETHER AND TAPE	T4-T5-T6	T4-T7-F7 T5-T8-F8 T6-T9-F9
BRAKE LEADS BR1 TO	B1 & B3	B1
BR2 TO	B2 & B4	B4
CONNECT TOGETHER AND TAPE		B2 & B3
THERMO GUARD T6	T6	T6
TG	T6	T6

COLOR CODE	
7	BROWN
8	YELLOW
9	WHITE
4	ORANGE
3	RED
6	BLUE
T1-T2-T3	BLACK
R1-R2	GREEN
B1-B2	RED
1	RED
2	YELLOW
3	BLACK
T6-T6	PURPLE

WIRING DIAGRAM FOR POWER GAGE USING DINABRAKE MOTOR WITH INTERNAL SPEED RESPONSIVE CONTROL & RIDGEWOOD FRICTION BRAKE

Allen Bradley  
702-AOD93 K



**-OPERATION-**

**BACKWARD FAST:** MOTOR RUNS AT FULL SPEED WHILE PUSH BUTTON IS PRESSED. WHEN BUTTON IS RELEASED, CONTACTS OF SPEED RESPONSIVE RELAY IN THE MOTOR (R1 & R2) REMAIN CLOSED UNTIL MOTOR COMES TO A STOP. NORMALLY CLOSED CONTACT "B" CLOSSES CIRCUIT TO CR, ENERGIZING DINABRAKE WINDING WHILE MOTOR IS COMING TO A STOP.

**FORWARD FAST:** SAME AS BACKWARD FAST EXCEPT MOTOR IS OPERATED IN THE FORWARD DIRECTION.

**FORWARD SLOW:** MOTOR WILL RUN AT A REDUCED SPEED. THE MOTOR AND THE DINABRAKE WINDING ARE ENERGIZED AT THE SAME TIME. THE MOTOR IS A TORQUE WOUND MOTOR AND OPERATES AT THE LOWER PORTION OF THE SPEED RANGE IN THIS SETTING. THE MAXIMUM TIME MOTOR SHOULD BE OPERATED IN THIS POSITIONING RANGE IS 20 SECONDS CONTINUOUS. THE MOTOR IS EQUIPPED WITH A THERMOGUARD TO PREVENT EXCESS HEATING OF THE WINDING. A SPRING SET FRICTION BRAKE IS PROVIDED FOR HOLDING AND IS INTERNALLY CONNECTED IN THE MOTOR.

POWER UNIT CONNECTION		
	220 VOLTS	440 VOLTS
MOTOR LEADS	T1 TO T1 & T7 & F7	T1
	T2 TO T2 & T8 & F8	T2
	T3 TO T3 & T9 & F9	T3
CONNECT TOGETHER AND TAPE	T4-T5-T6	T4-T7-F7 T8-T9-F8 T6-T9-F9
FRICTION BRAKE LEADS ARE F7 & F8 & F9 AND ALWAYS ARE CONNECTED TO T7-T8-T9		
BRAKE LEADS	BR1 TO B1 & B3	B1
	BR2 TO B2 & B4	B4
CONNECT TOGETHER AND TAPE		B2 & B3
THERMO-GUARD	T8 TO T8	T8
	T9 TO T9	T9

COLOR CODE	
7	BROWN
8	YELLOW
9	WHITE
4	ORANGE
5	RED
6	BLUE
T1-T2-T3	BLACK
R1-R2	GREEN
B1-B2	RED
I	RED
2	YELLOW
3	BLACK
T8-T9	PURPLE

**WIRING DIAGRAM FOR POWER GAGE USING DINABRAKE MOTOR WITH INTERNAL SPEED RESPONSIVE CONTROL & RIDGEWOOD FRICTION BRAKE**

