

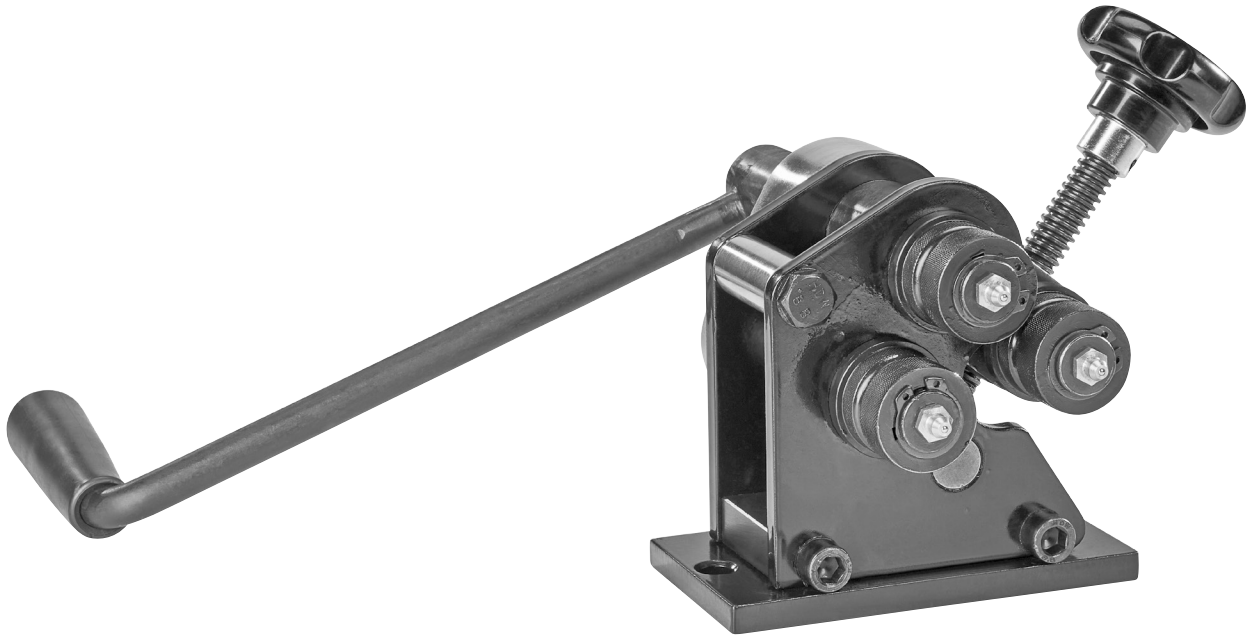
Owner's Manual & Safety Instructions

Save This Manual Keep this manual for the safety warnings and precautions, assembly, operating, inspection, maintenance and cleaning procedures. Write the product's serial number in the back of the manual (or month and year of purchase if product has no number). Keep this manual and the receipt in a safe and dry place for future reference.

24b

CENTRALTM MACHINERY

GEAR-DRIVEN RING ROLLER



Visit our website at: <http://www.harborfreight.com>
Email our technical support at: productsupport@harborfreight.com

70907

When unpacking, make sure that the product is intact and undamaged. If any parts are missing or broken, please call 1-888-866-5797 as soon as possible.

⚠ WARNING

Read this material before using this product. Failure to do so can result in serious injury. **SAVE THIS MANUAL.**

Copyright© 2024 by Harbor Freight Tools®. All rights reserved.
No portion of this manual or any artwork contained herein may be reproduced in any shape or form without the express written consent of Harbor Freight Tools. Diagrams within this manual may not be drawn proportionally. Due to continuing improvements, actual product may differ slightly from the product described herein. Tools required for assembly and service may not be included.

IMPORTANT SAFETY INFORMATION

WARNING

Read all safety warnings and instructions.

Failure to follow the warnings and instructions may result in serious injury.

Save all warnings and instructions for future reference.

Work Area Safety

1. Keep children and bystanders away while operating. Distractions can cause you to lose control.
2. Keep work area clean and well lit. Cluttered or dark areas invite accidents.

Setup Safety

1. **Attach Ring Roller securely to solid and level surface that can support weight of Ring Roller and workpiece, and the leverage force of the Handle movement.**
2. **Make sure chosen mounting location allows enough clearance for movement of Handle.**
3. **Verify that installation surface has no hidden utility lines before drilling mounting holes or driving bolts.**

Operation Safety

1. **Stay alert, watch what you are doing and use common sense when operating a tool. Do not use while you are tired or under the influence of drugs, alcohol or medication.** *A moment of inattention may result in serious personal injury.*
2. **Use personal protective equipment. Always wear ANSI-approved safety goggles.** *Safety equipment used for appropriate conditions will reduce personal injuries.*
3. **Dress properly. Do not wear loose clothing or jewelry. Keep your hair, clothing and gloves away from moving parts.** *Loose clothes, jewelry or long hair can be caught in moving parts.*
4. **Do not force the tool. Use the correct tool for your application.** *The correct tool will do the job better and safer at the rate for which it was designed.*
5. **This product is not a toy.** Keep it out of reach of children.
6. The warnings, precautions, and instructions discussed in this instruction manual cannot cover all possible conditions and situations that may occur. It must be understood by the operator that common sense and caution are factors which cannot be built into this product, but must be supplied by the operator.

Maintenance and Storage Safety

1. **Have product serviced by a qualified repair person using only identical replacement parts.** *This will ensure that the safety of the product is maintained.*
2. **Store idle tools out of the reach of children and do not allow persons unfamiliar with the tool or these instructions to operate the tool.** *Tools are dangerous in the hands of untrained users.*
3. **Maintain tools. Check for misalignment or binding of moving parts, breakage of parts and any other condition that may affect the tool's operation. If damaged, have the tool repaired before use.** *Many accidents are caused by poorly maintained tools.*
4. **Maintain labels and nameplates on the tool.** These carry important safety information. If unreadable or missing, contact Harbor Freight Tools for a replacement.



SAVE THESE INSTRUCTIONS.

Specifications

Ring Size Range	3" and larger
Flat Stock Capacity	3/16"x1"
Round Stock Capacity	1/4" Diameter
Drive	Gear
Rollers	Heat Treated Steel

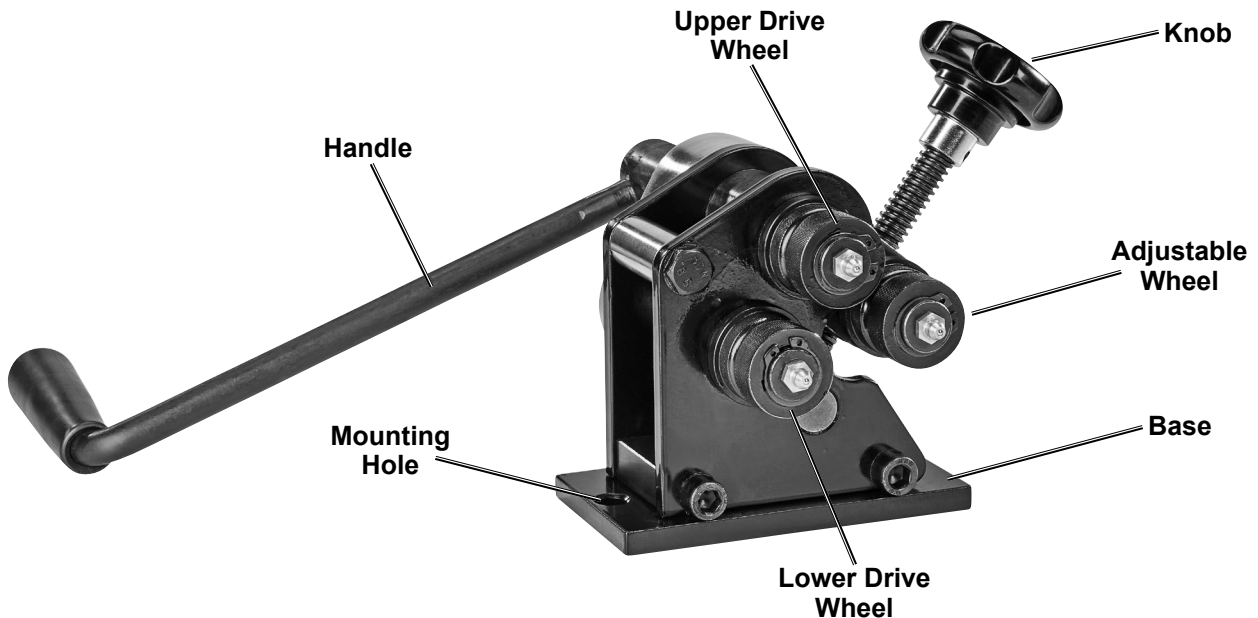
Setup - Before Use:



Read the **ENTIRE IMPORTANT SAFETY INFORMATION** section at the beginning of this manual including all text under subheadings therein before set up or use of this product.

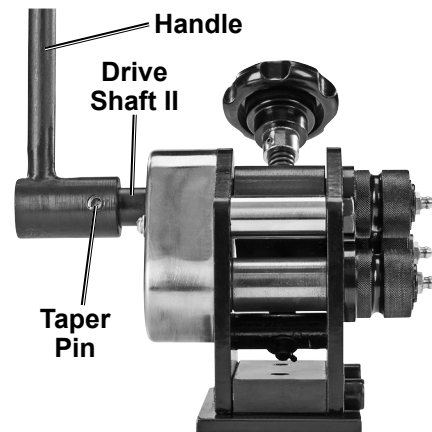
Note: For additional information regarding the parts listed in the following pages, refer to *Parts List and Diagram* on page 6.

Functions



Assembly

1. Slide Handle (15) onto Drive Shaft II (17) and align holes in Handle with holes in Drive Shaft.
2. Secure the Handle to the Drive Shaft using the Taper Pin (20). Insert the Pin into the hole on Handle as shown. If necessary, lightly tap the Taper Pin into place.



Work Piece and Work Area Set Up

Designate a work area that is clean and well-lit. The work area must not allow access by children or pets to prevent distraction and injury.

Mounting

▲ WARNING! TO PREVENT SERIOUS INJURY: Attach Ring Roller securely to solid and level surface that can support weight of Ring Roller and workpiece, with enough clearance for movement of Handle. Verify that installation surface has no hidden utility lines before drilling mounting holes or driving bolts.

1. Place Ring Roller on flat, solid surface capable of supporting weight of tool and workpiece.
2. Using holes in base of Ring Roller as template, mark location for two mounting holes.
3. Drill appropriate size holes for bolts (sold separately) at the marked locations.
4. Secure Ring Roller with appropriate bolts, washers and nuts (sold separately).

Operating Instructions



Read the **ENTIRE IMPORTANT SAFETY INFORMATION** section at the beginning of this manual including all text under subheadings therein before set up or use of this product.

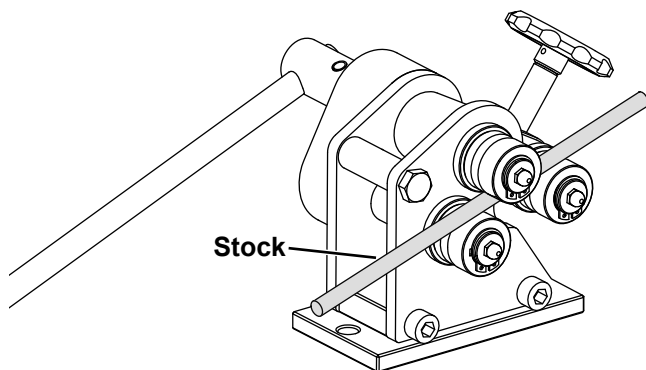
Operation

1. Determine the size ring to be processed. Do not use flat stock larger than 3/16" x 1" or round stock larger than 1/4" in diameter.
 2. To set ring size move the Adjustable Wheel up or down by turning the Knob. Refer to *Functions* on page 3.
- Note:** Achieving the desired ring diameter is an iterative process. Practice on scrap stock to find the correct wheel adjustment setting to make the desired size ring.
3. Insert the stock between the Upper Drive Wheel and both the Adjustable Wheel and Lower Drive Wheel.

4. Turn the Knob clockwise to clamp the stock between the Wheels.

▲ WARNING! TO PREVENT SERIOUS INJURY: After stock has been clamped between the Wheels, keep hands and fingers clear of the Wheels while the Handle is being rotated.

5. Rotate the Handle counterclockwise to process the ring.
6. To remove the completed rings, turn the Knob counterclockwise to loosen the clamping action.



Maintenance and Servicing



Procedures not specifically explained in this manual must be performed only by a qualified technician.

CAUTION

TO PREVENT INJURY FROM TOOL FAILURE:

Do not use damaged equipment. If damaged or loose parts are noted, have the problem corrected before further use.

1. **BEFORE EACH USE**, inspect the general condition of the tool. Check for:
 - loose hardware
 - misalignment or binding of moving parts
 - cracked or broken parts
 - any condition that may affect its safe operation.

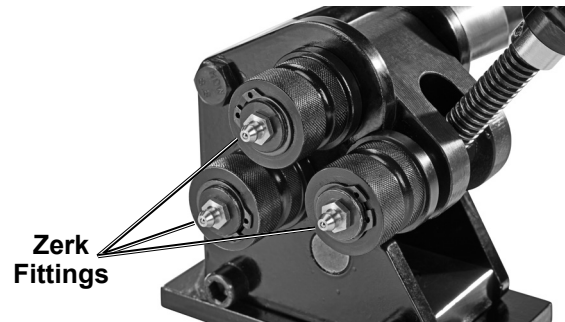
If a problem occurs, have the problem corrected before further use.

Do not use damaged equipment.

2. **AFTER USE**, wipe external surfaces of the tool with clean cloth.

3. **PERIODICALLY**, perform the following procedures:

- check and tighten the mounting bolts to be sure the Ring Roller is secure.
- grease the Wheel Drive Shafts using the Zerk Fittings.



PLEASE READ THE FOLLOWING CAREFULLY

THE MANUFACTURER AND/OR DISTRIBUTOR HAS PROVIDED THE PARTS LIST AND ASSEMBLY DIAGRAM IN THIS DOCUMENT AS A REFERENCE TOOL ONLY. NEITHER THE MANUFACTURER OR DISTRIBUTOR MAKES ANY REPRESENTATION OR WARRANTY OF ANY KIND TO THE BUYER THAT HE OR SHE IS QUALIFIED TO MAKE ANY REPAIRS TO THE PRODUCT, OR THAT HE OR SHE IS QUALIFIED TO REPLACE ANY PARTS OF THE PRODUCT. IN FACT, THE MANUFACTURER AND/OR DISTRIBUTOR EXPRESSLY STATES THAT ALL REPAIRS AND PARTS REPLACEMENTS SHOULD BE UNDERTAKEN BY CERTIFIED AND LICENSED TECHNICIANS, AND NOT BY THE BUYER. THE BUYER ASSUMES ALL RISK AND LIABILITY ARISING OUT OF HIS OR HER REPAIRS TO THE ORIGINAL PRODUCT OR REPLACEMENT PARTS THERETO, OR ARISING OUT OF HIS OR HER INSTALLATION OF REPLACEMENT PARTS THERETO.

Parts List and Diagram

Parts List

Part	Description	Qty
1	Zerk Fitting M8x1	3
2	C-Ring 19mm	5
3	Hex Bolt M10x60	1
4	Drive Wheel	2
5	Left Frame	1
6	Copper Bushing	2
7	Stand	1
8	Bushing	1
9	Drive Shaft I	1
10	Key 4x16	4
11	Right Frame	1
12	Gear	2
13	Cover	1
14	Screw M5x45	2
15	Handle	1
16	Adjustable Wheel	1

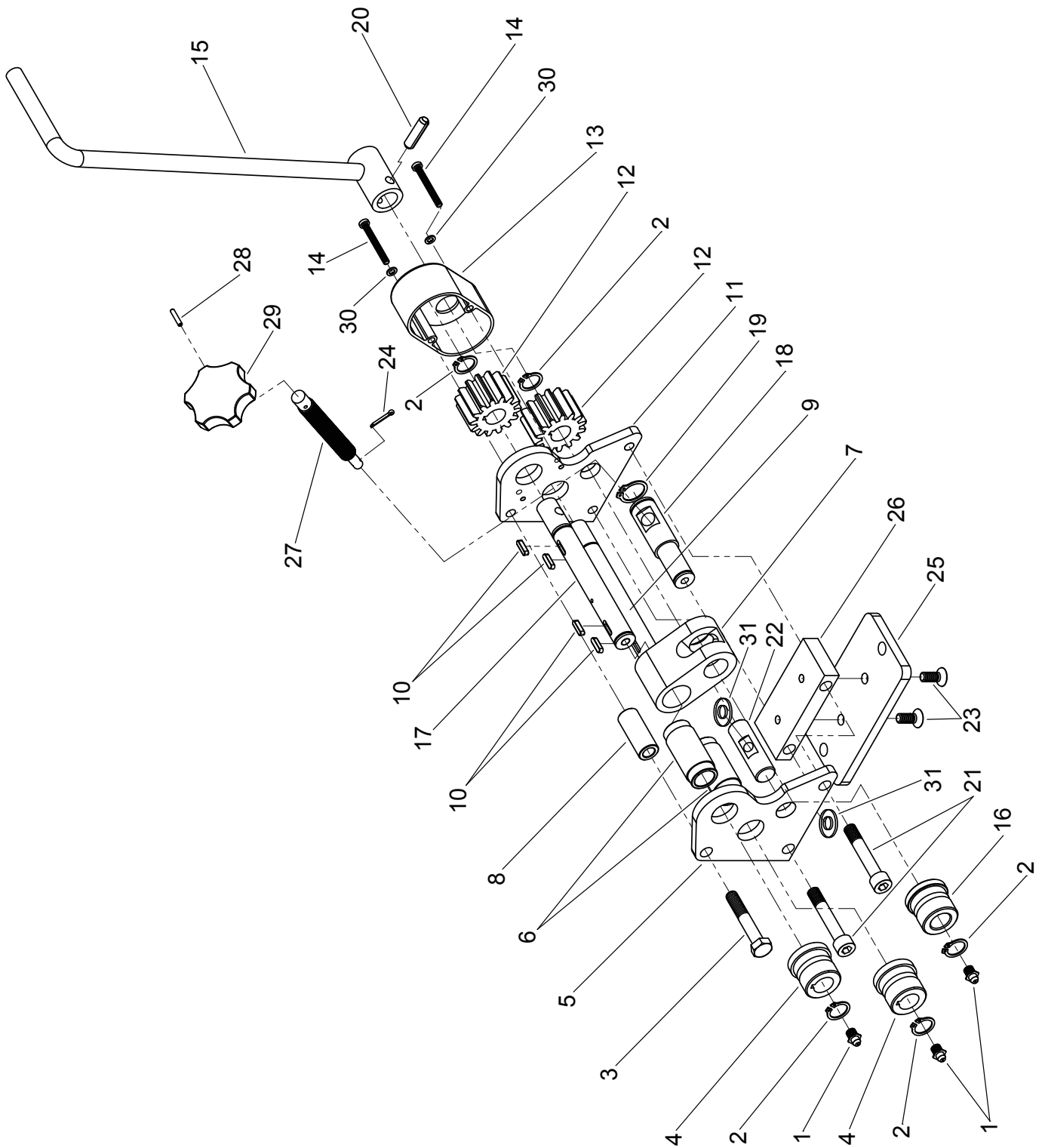
Part	Description	Qty
17	Drive Shaft II	1
18	Adjustable Shaft	1
19	C-Ring 22mm	1
20	Taper Pin 8x28	1
21	Hex Key Screw M10x60	2
22	Shaft (with hole)	1
23	Hex Key Screw M8x20	2
24	Pin 3x12	1
25	Base	1
26	Mounting Plate	1
27	Lead Screw	1
28	Locking Pin 3x18	1
29	Knob	1
30	Washer 5mm	2
31	Washer 8mm	2

Record Serial Number Here: _____

Note: If product has no serial number, record month and year of purchase instead.

Note: Some parts are listed and shown for illustration purposes only, and are not available individually as replacement parts. Specify UPC 193175519146 when ordering parts.

Assembly Diagram



Limited 90 Day Warranty

Harbor Freight Tools Co. makes every effort to assure that its products meet high quality and durability standards, and warrants to the original purchaser that this product is free from defects in materials and workmanship for the period of 90 days from the date of purchase. This warranty does not apply to damage due directly or indirectly, to misuse, abuse, negligence or accidents, repairs or alterations outside our facilities, criminal activity, improper installation, normal wear and tear, or to lack of maintenance. We shall in no event be liable for death, injuries to persons or property, or for incidental, contingent, special or consequential damages arising from the use of our product. Some states do not allow the exclusion or limitation of incidental or consequential damages, so the above limitation of exclusion may not apply to you. THIS WARRANTY IS EXPRESSLY IN LIEU OF ALL OTHER WARRANTIES, EXPRESS OR IMPLIED, INCLUDING THE WARRANTIES OF MERCHANTABILITY AND FITNESS.

To take advantage of this warranty, the product or part must be returned to us with transportation charges prepaid. Proof of purchase date and an explanation of the complaint must accompany the merchandise. If our inspection verifies the defect, we will either repair or replace the product at our election or we may elect to refund the purchase price if we cannot readily and quickly provide you with a replacement. We will return repaired products at our expense, but if we determine there is no defect, or that the defect resulted from causes not within the scope of our warranty, then you must bear the cost of returning the product.

This warranty gives you specific legal rights and you may also have other rights which vary from state to state.

CENTRAL[™]
MACHINERY