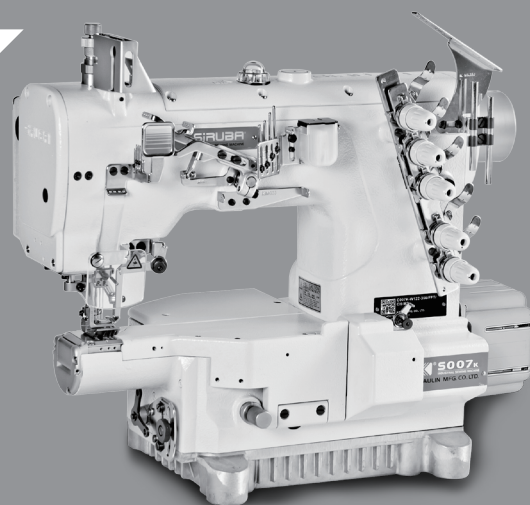


**SIRUBA**<sup>®</sup> Sew Reach

使用說明書與零件圖

INSTRUCTION BOOK & PARTS LIST

■ S007KD/FFT





## 產品規格

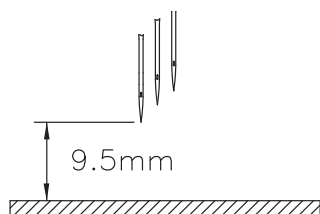
## PRODUCT SPECIFICATION

## 1. 規格

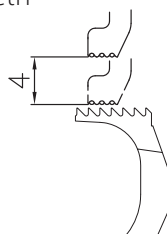
## 1. Specification

規格 Specifications	標準值 Standard value
針棒行程 Needle bar stroke	33±0.5 mm
左針高度 Left needle height	9.5 mm
送具高度 Feed dog height	0.8~1.2 mm
押具揚程 Presser foot lift	5 mm
使用針 Needle	UYX128GAS#10
上送齒上下行程 Top and bottom stroke for top feed teeth	4 mm
上送齒前後行程 Front and back stroke for top feed teeth	1~5.5 mm 可調式 adjustable
啟動扭力 Start up torque	4.5 kg-cm 以下 Below 4.5 kg-cm
最高轉速 Maximum speed	4500 s.p.m
噪音值 Noise level	80dB(A) 以下 Below 80dB(A)
上送齒與下送具最小距離 The minimum distance between top feed teeth and bottom feed dog	0.5 mm
上叉高度 Spreader height	9.5mm

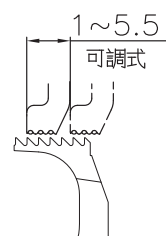
左針高度  
Left needle height



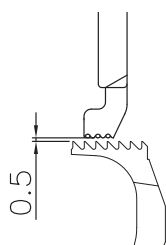
上送齒上下行程  
Top and bottom stroke for top feed teeth



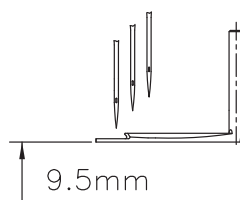
上送齒前後行程  
front and back stroke for top feed teeth



上送齒與下送具最小距離  
The minimum distance between top feed teeth and bottom feed dog



上叉高度  
Spreader height



## 各部件名稱

## PART NAMES

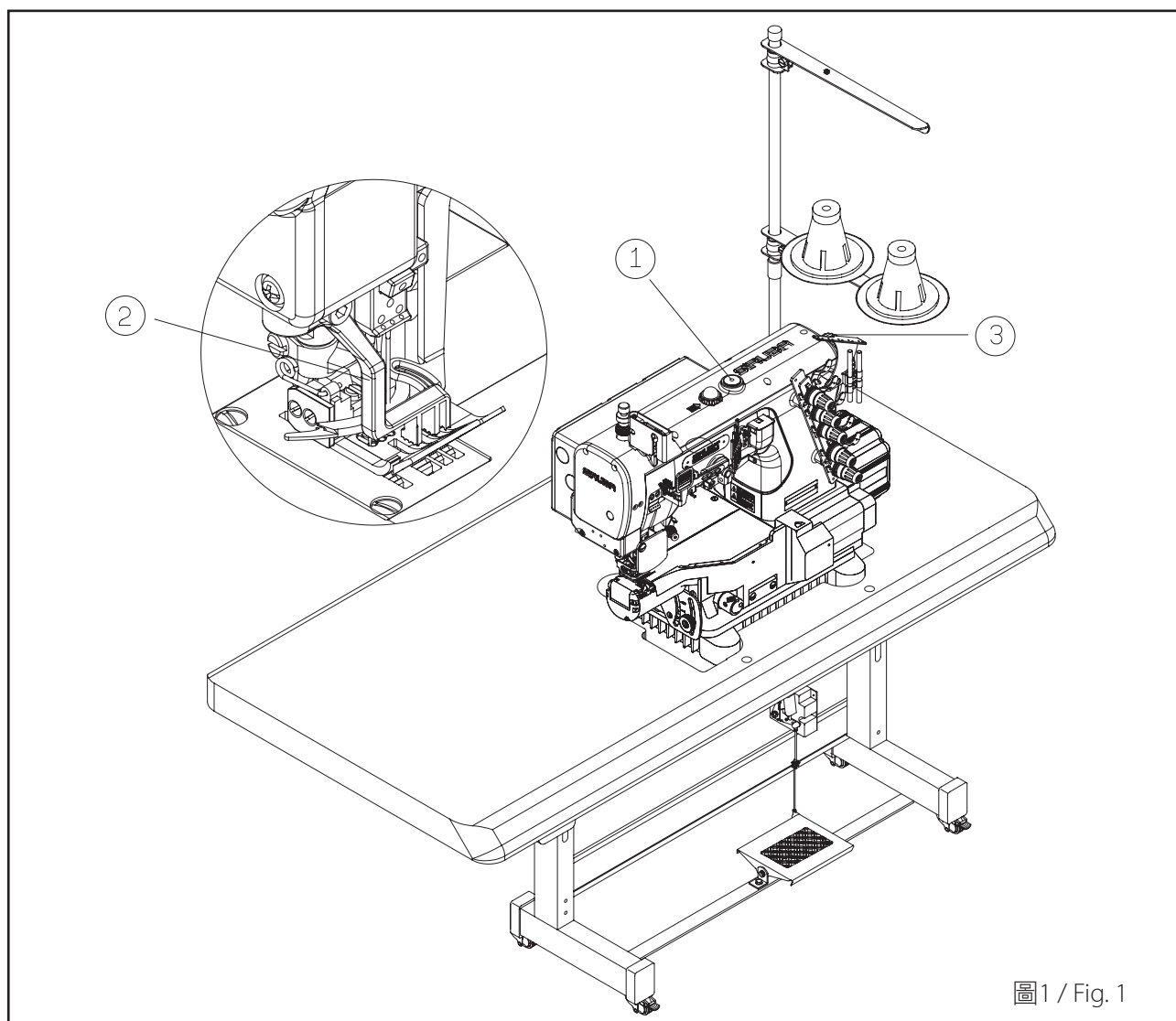


圖1 / Fig. 1

① 上送行程調整鈕

② 上送具

③ 刻度調整手輪

① Top feed stroke adjust button

② Top feed dog

③ scale adjustment hand wheel

## 調整

## ADJUSTMENT

## 1. 上送齒行程大小之調整 (圖2)

行程大小由1.5~5.5mm無階段性調整

- (1.) 用左手壓下按鈕 ①，再以右手轉動手輪直到左手手指感覺按鈕嵌入到機器內部卡槽。
- (2.) 持續轉動手輪選擇所需之行程大小對準 ②，然後放開按鈕。
- (3.) 配合下送齒縫距，依手輪上紅色刻度 ③ 調整上送齒所需行程即可。

## 1. Adjust the top feed stroke (Fig. 2)

Adjust the stroke from 1.5 to 5.5mm without periodic adjustment

- (1.) Press button ① with left hand, and turn the hand wheel with right hand until the left hand finger feel the button enters the machine slot.
- (2.) Keep turning the hand wheel until ② pointed at the required stroke level, and release the button.
- (3.) Adjust the required top feed stroke according to red mark ③ on the hand wheel in coordination with bottom feed teeth distance.

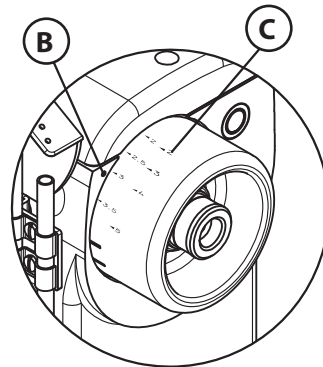
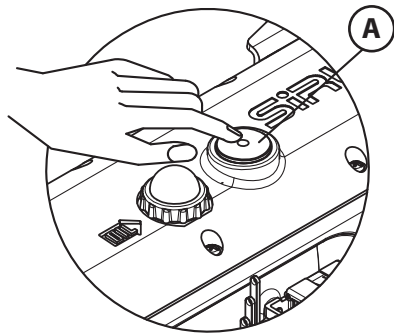


圖2 / Fig. 2

## 2. 壓具壓力強度之調整

在布料推送順暢且縫合完美的情況下，盡量使壓具壓力輕一點。

\* 鬆開螺帽 ②，將螺桿 ① 順時針旋轉壓力變大，反之則變小。(圖3)

## 3. 上送齒壓力強度之調整

在布料推送順暢且縫合完美的情況下，上送齒應盡量穩固，故壓力須稍大。

\* 鬆開螺帽 ④，將螺桿 ③ 順時針旋轉壓力變大，反之則變小。(圖3)

## 2. Adjust the presser foot strength

Lighten the presser foot as much as possible when the fabric can be fed smoothly and stitched perfectly.

\* Loose the screw nut ②. When the screw rod ① is rotated clockwise, the pressure is bigger, and when rotated counterclockwise, the pressure is smaller. (fig. 3)

## 3. Adjust the top feed teeth strength

The top feed teeth should be as stable as possible when the fabric is fed smoothly and stitched perfectly.

Thus adjust the pressure level as big as possible.

\* Loose the screw nut ④. When the screw rod ③ is rotated clockwise, the pressure is bigger, and when rotated counterclockwise, the pressure is smaller. (fig. 3)

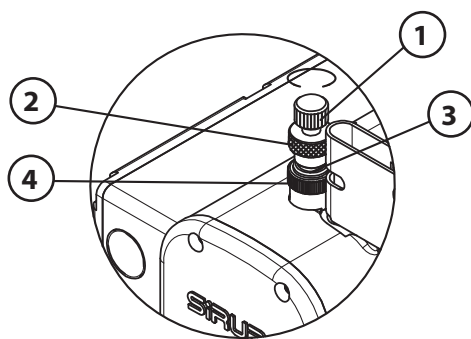
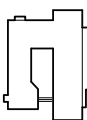

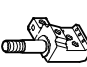
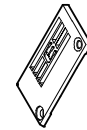
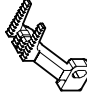







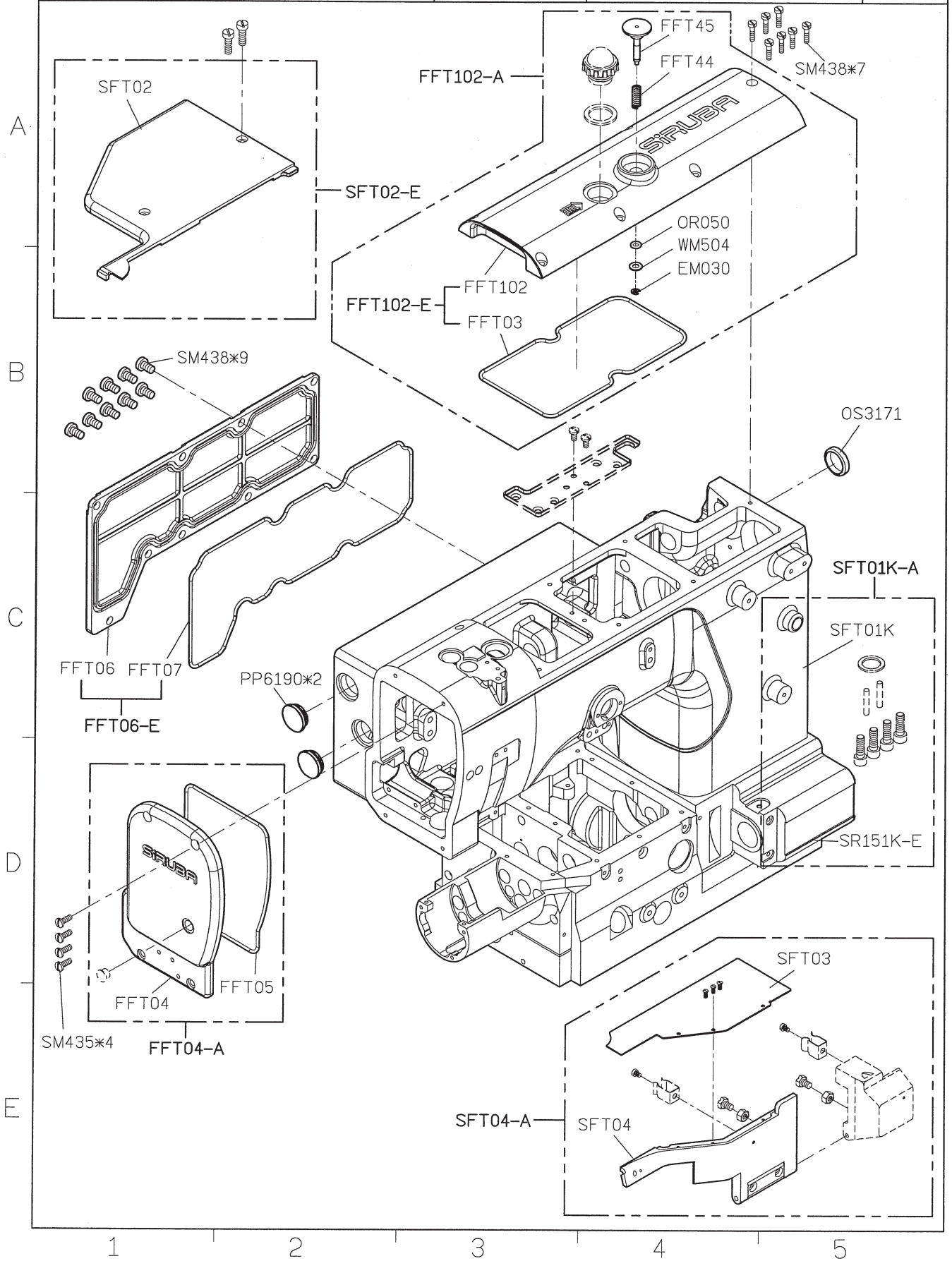
圖3 / Fig. 3

SIRUBA GAGE PARTS LIST		Series		Remark												Page	Date			
		S007KD		USE FOR FFT												1 / 2	2013/09/12			
																				
MODEL		SUB-CLASS		NEEDLE CLAMP		NEEDLE PLATE		MAIN FEED DOG		DIFF. FEED DOG		TOP FEED DOG		PRESSER FOOT		LOOPER		SPREADER		NEEDLE
機 型		規 格		針 座		針 板		主送具		差送具		上送具		壓 具		勾 針		上 叉		使用針
W121/FFT/PCH		240 248 356 364		M5240 M5248 M5356 M5364		E4094K E4095K E4096K E4097K		D4324K D4325K		H4387K H4379K		F7240N F7356N		P7240N-A P7248N-A P7356N-A P7364N-A		MT01		MH41		UYX128GAS#10
W121/FFT/PCH /UTT(UTX)		240 248 356 364		M5240 M5248 M5356 M5364		E4094K E4095K E4096K E4097K		D4324K D4325K		H4387K H4379K		F7240N F7356N		P7240N-A P7248N-A P7356N-A P7364N-A		MT01		MH41		UYX128GAS#10
W122/FFT/PCH		240 248 356 364		M5240 M5248 M5356 M5364		E3994K E3995K E3996K E3997K		D4324K D4325K		H4387K H4379K		F7240N F7356N		P7240N-A P7248N-A P7356N-A P7364N-A		MT01		MH41		UYX128GAS#10
W122/FFT/PCH /UTT(UTX)		240 248 356 364		M5240 M5248 M5356 M5364		E3994K E3995K E3996K E3997K		D4324K D4325K		H4387K H4379K		F7240N F7356N		P7240N-A P7248N-A P7356N-A P7364N-A		MT01		MH41		UYX128GAS#10

SIRUBA			Series		Remark				Page	Date
GAGE PARTS LIST			S007KD		USE FOR FFT				2 / 2	2013/09/12
MODEL	SUB-CLASS	NEEDLE CLAMP	NEEDLE PLATE	MAIN FEED DOG	DIFF. FEED DOG	TOP FEED DOG	PRESSER FOOT	LOOPER	SPREADER	
機 型	規 格	針 座	針 板	主送具	差送具	上送具	壓 具	勾 針	上 叉	
W131/FFT/PCH	240	M5240	E7240SL	D7240S	H7240S	F7240F	P7240F-A	MT01	MH41	UYX128GAS#10
	248	M5248	E7248SL				P7248F-A			
	356	M5356	E7356SL	D7356S	H7356S	F7356F	P7356F-A			
	364	M5364	E7364SL				P7364F-A			
W131/FFT/PCH /UTT(UTX)	240	M5240	E7240SL	D7240S	H7240S	F7240F	P7240F-A	MT01	MH41	UYX128GAS#10
	248	M5248	E7248SL				P7248F-A			
	356	M5356	E7356SL	D7356S	H7356S	F7356F	P7356F-A			
	364	M5364	E7364SL				P7364F-A			
W132/FFT/PCH	240	M5240	E7240SM	D7240S	H7240S	F7240F	P7240F-A	MT01	MH41	UYX128GAS#10
	248	M5248	E7248SM				P7248F-A			
	356	M5356	E7356SM	D7356S	H7356S	F7356F	P7356F-A			
	364	M5364	E7364SM				P7364F-A			
W132/FFT/PCH /UTT(UTX)	240	M5240	E7240SM	D7240S	H7240S	F7240F	P7240F-A	MT01	MH41	UYX128GAS#10
	248	M5248	E7248SM				P7248F-A			
	356	M5356	E7356SM	D7356S	H7356S	F7356F	P7356F-A			
	364	M5364	E7364SM				P7364F-A			

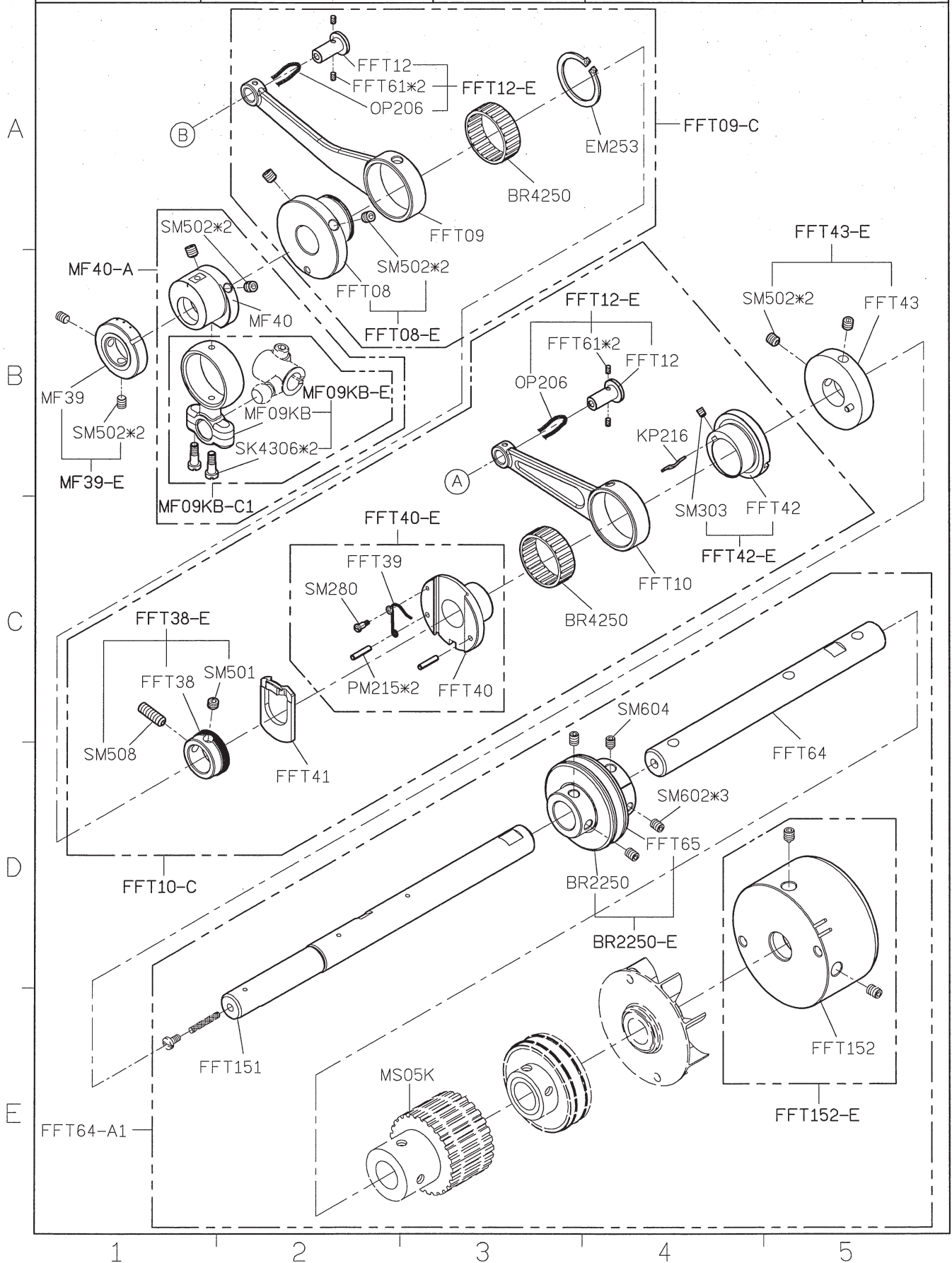


SIRUBA PARTS LIST	Series	Parts Group	Subclass / Remark	Page
	S007KD	FFT	With Direct-Drive Motor	1/7
				Date
				2016/8/19

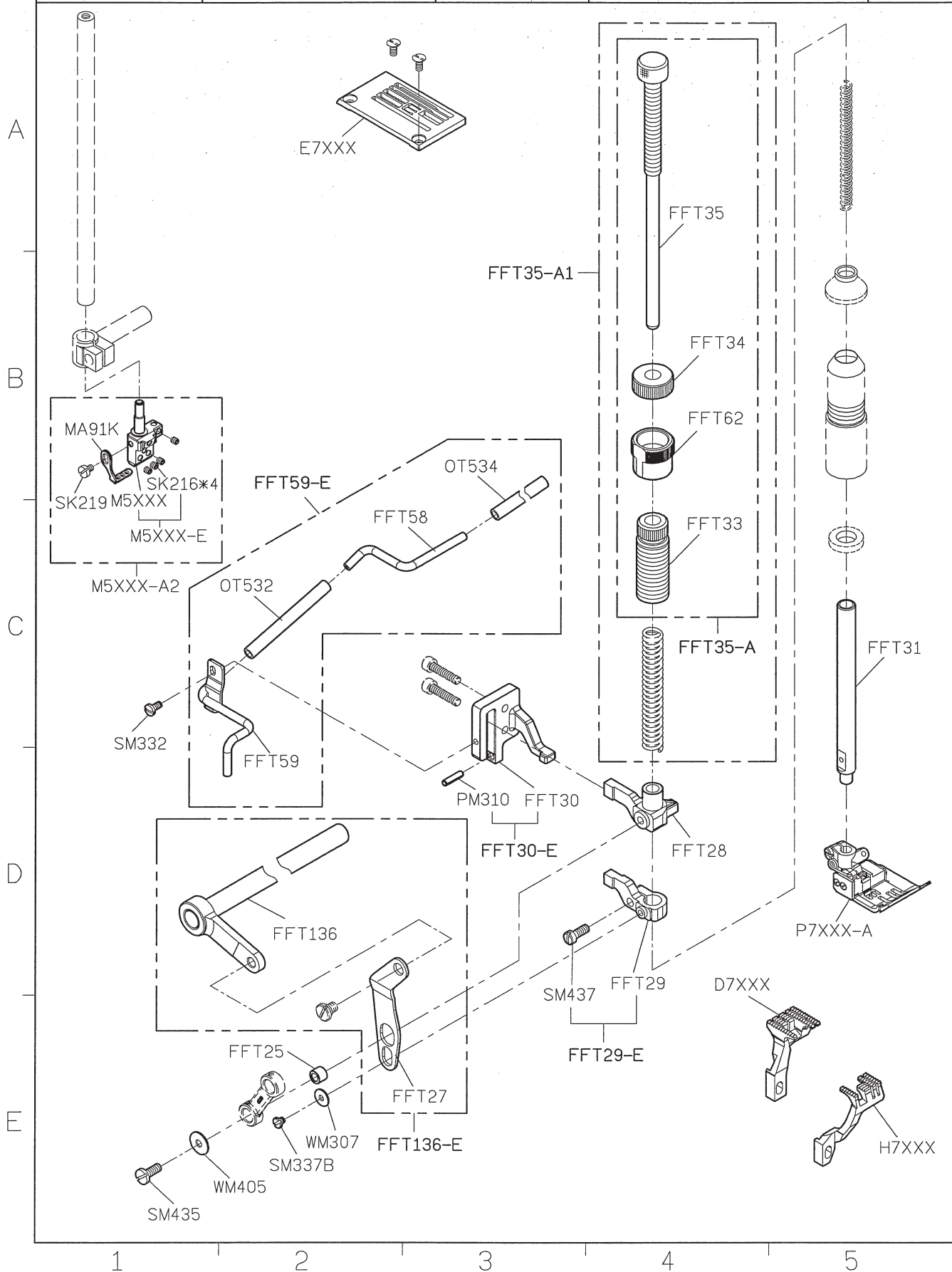


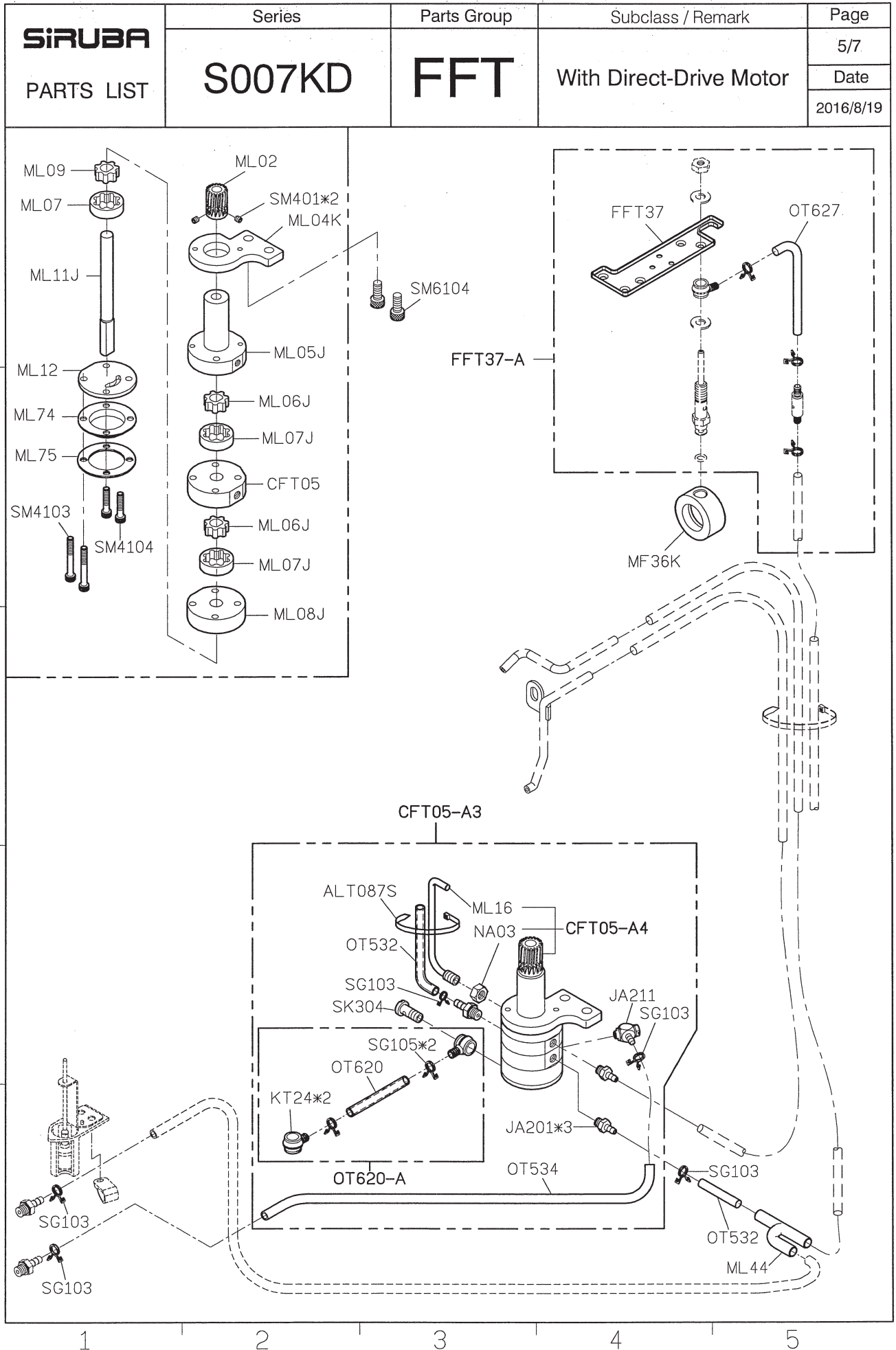


SIRUBA PARTS LIST	Series	Parts Group	Subclass / Remark	Page
	S007KD	FFT	With Direct-Drive Motor	3/7
				Date
				2016/8/18

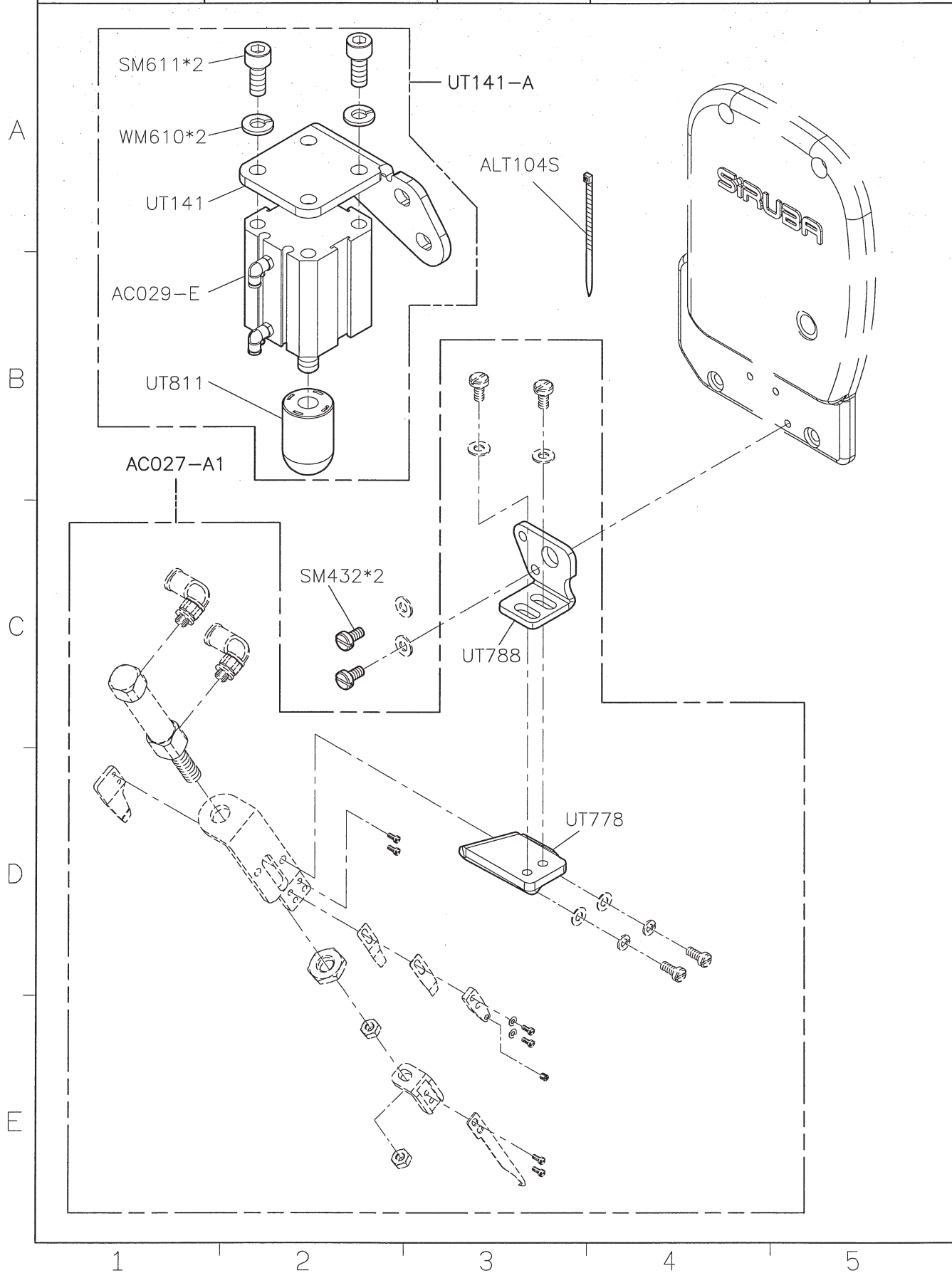


SIRUBA PARTS LIST	Series	Parts Group	Subclass / Remark	Page
	S007KD	FFT	With Direct-Drive Motor	4/7
				Date
				2016/8/18



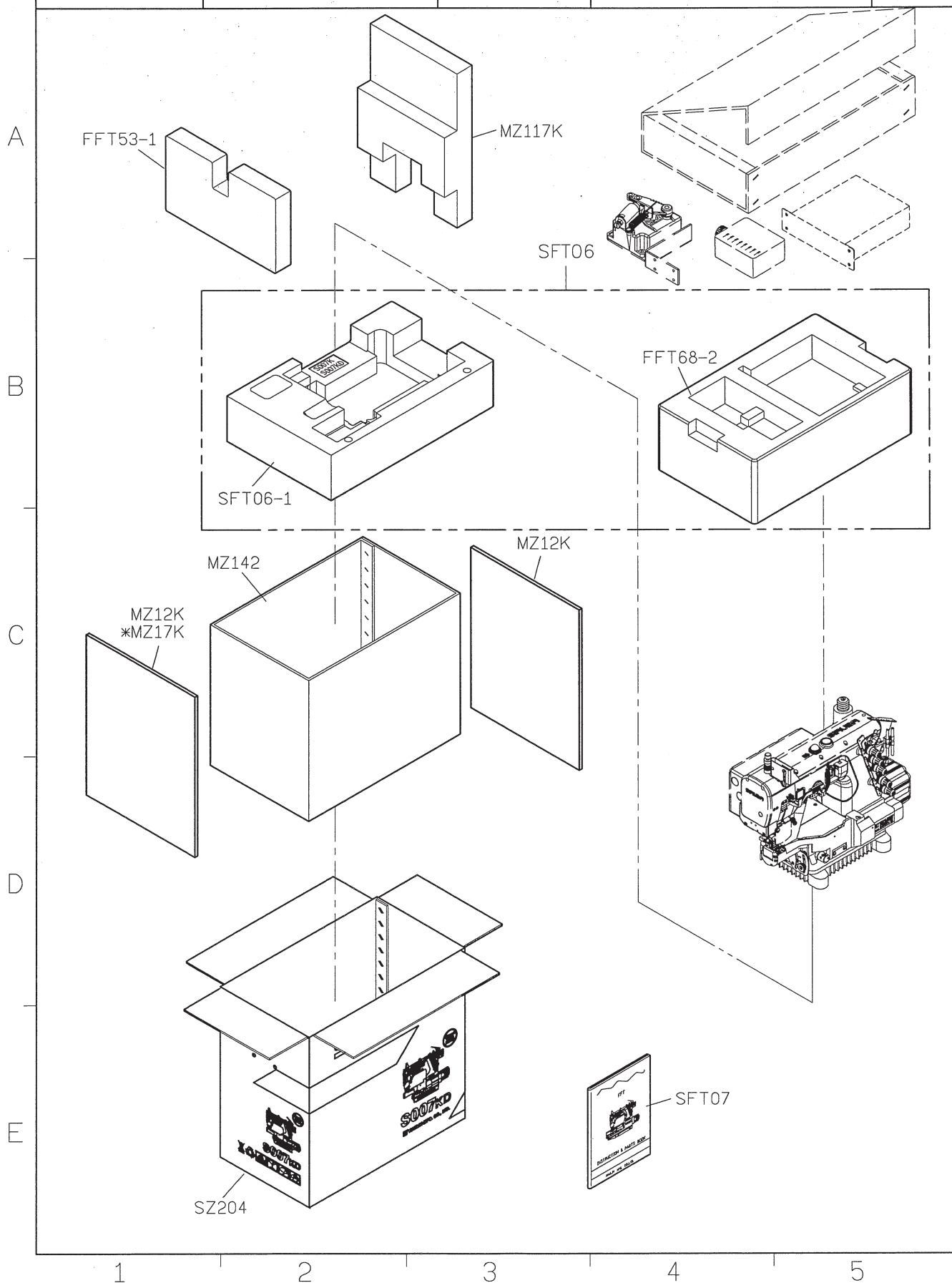


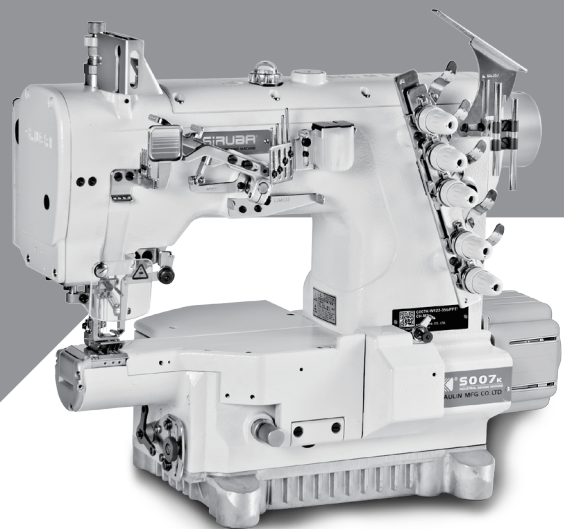
SIRUBA PARTS LIST	Series	Parts Group	Subclass / Remark	Page
	S007KD	FFT	With Direct-Drive Motor Use for UT	6/7
				Date
				2016/8/18





SIRUBA PARTS LIST	Series	Parts Group	Subclass / Remark	Page
	S007KD	FFT	With Direct-Drive Motor * Use for UT	7/7
				Date
				2016/8/22





由於對產品的改良及更新，本產品使用說明書中與零件圖之產品及外觀的修改恕不事先通知！  
The specification and/or appearances of the equipment described in this instruction book & parts list are subject to change because of modification which will without previous notice.  
SFT07.AUG.2016